

# Stunning Colored Pencil on Black Paper

Led by: **Amy Lindenberger, CPSA, CPX**

## Two Day Zoom Workshop

Saturday and Sunday, **October 23–24, 2021**

9:00 a.m.–4:00 p.m. Pacific Time

with a one-hour lunch and breaks each day

Skin tones, fabric, shadow, and light—all created using colored pencil on a black background. What better way to create drama and perhaps some mystique in your work? You'll recreate Amy's *Ballerina* to learn her techniques for working on black paper.

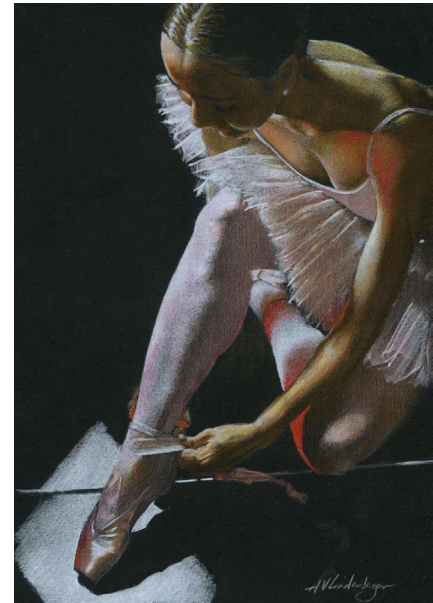
### Amy will teach you:

- when it makes sense to use black paper, and when it does not
- what a reverse grisaille underpainting is, and why it is critical to a successful drawing on black paper
- how colored pencils vary in opacity and why it is an important consideration in working on black paper
- how to “translate” colors as they appear on white paper for effective use on black paper



Amy Lindenberger, CPSA, CPX

**ABOUT AMY LINDENBERGER:** An Ohio native, Amy graduated Summa Cum Laude from the University of Akron (OH) with a Bachelor of Fine Arts degree in Drawing. In 1990, she became a CPSA charter member, subsequently earning both CPSA and CPX signature status. During her art career she has completed more than 600 privately commissioned portraits, opened The Linden Tree Fine Art Studio offering drawing classes for children, teens, and adults, and became a member of the faculty of the Botanical Art and Illustration Program at Phipps Conservatory in Pittsburgh, Pennsylvania. She is the author of the very popular *COLORS: A Workbook*, and five books in the CP Surfaces Series. Website: [www.amylindenberger.com](http://www.amylindenberger.com)



*Ballerina*, 10" x 8"  
Amy Lindenberger, CPSA, CPX

**Only \$120\* for this  
two-day workshop**

Limited to 24 participants

**Register early to secure your place!**

See details, registration form,  
and supply list on pages 2 and 3.

\*For CPSA DC 201 members

# Stunning Colored Pencil on Black Paper

**Dates:** October 23–24, 2021 (Saturday–Sunday)

**Hours:** 9 a.m.–4 p.m. (Pacific Time)  
(one hour lunch plus breaks)

**Fee:** \$120 for CPSA DC 201 members (2021 or 2022)  
\$140 for non-members

*Includes some supplies mailed to you. Details on page 3.*

### Payment

You may pay in full upon registering or pay a \$60 deposit.  
Any balance must be received by the chapter no later than  
**October 1, 2021.** Address is below on registration form.

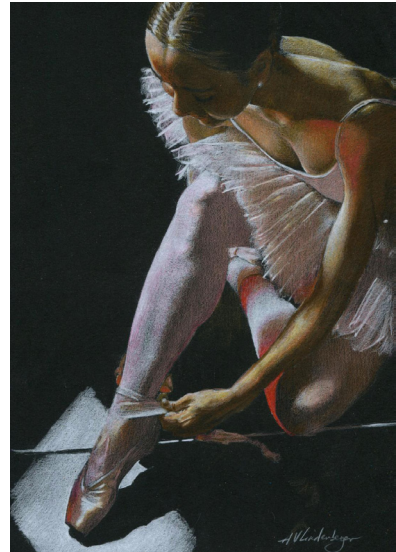
### Cancellations

Full refund if cancelled by **October 1, 2021.**

### Questions about the workshop?

Contact Dee Wagoner at [deebears3@aol.com](mailto:deebears3@aol.com)

**This workshop is limited to 24 students. Register early!**



*Ballerina, 10" x 8"*  
Amy Lindemberger, CPSA, CPX

**Stunning Colored Pencil on Black Paper**  
A two-day Zoom workshop with  
**Amy Lindemberger, CPSA, CPX**  
**October 23–24, 2021**  
*Please Print Clearly*

Name \_\_\_\_\_

Address \_\_\_\_\_

City \_\_\_\_\_ State \_\_\_\_\_ Zip \_\_\_\_\_

Email \_\_\_\_\_

Phone \_\_\_\_\_

**Mail completed registration form and check (payable to CPSA DC 201) to:**

CPSA Portland DC 201 Workshop  
c/o Gary Smith  
12705 SE River Rd., Apt. 108E  
Portland, OR 97222-9756

Member (\$120)  
 Non-member (\$140)

Total Enclosed: \$ \_\_\_\_\_

\$60 Deposit  
 Full payment

# SUPPLY LIST

## Stunning Colored Pencil on Black Paper

### SUPPLIES YOU WILL RECEIVE FROM AMY

Prior to the workshop you will receive a rigid 9x12 envelope in the mail from Amy containing:

- Two 8" x 10" pieces of Fabriano Black Black paper
- One piece of 8" x 10" white transfer paper
- The *Ballerina* reference photo
- Photo reference of the completed reverse grisaille layer
- Pair of color isolators
- Opacity chart
- Amy's "Tips for Working on Black Paper" handout



### SUPPLIES YOU'LL PROVIDE

*Do not wait until the last minute to order needed items in case they are back-ordered*

- Small drawing board, even a 9" x 12" piece of foam core or corrugated cardboard will do
- Masking or painter's tape
- 12-inch ruler
- Two templates cut from card stock: one 1" square, the other a ½" x 2" rectangle
- Scissors
- Scotch tape
- Ball point pen or any bright-colored Prismacolor Verithin pencil
- Kneaded eraser
- Removable mounting putty
- Narrow-diameter, white plastic eraser in a pen-type holder, for cleaning up details. I recommend either General's Factic BM2 Mechanical eraser (about 1/8" diameter) or Tombow's Mono Zero (about 1/16" diameter) because of their precision
- Black eraser such as General's Magic Black (Factis Black 18) or Staedtler Black Edition
- Drafting or other soft brush to wipe away eraser and pencil crumbs
- Handheld, battery-powered, or electric pencil sharpener that will give a VERY sharp point

### Prismacolor Premier (not Scholar) pencils:

- \*Pink PC929
- Nectar PC1092
- \*\*Salmon Pink PC1001
- Chocolate PC1082
- Light Umber PC941
- Goldenrod PC1034
- Carmine Red PC926
- Poppy Red PC922
- White PC938 (I recommend three)
- Prismacolor Verithin pencil: White 734

**NOTE:** due to the relatively transparent nature of colored pencil, only Prismacolor Premier pencils are recommended for this class as they are the most opaque brand. In particular, the Prismacolor Premier White pencil is essential to producing quality results for this technique. If you do not care for the soft nature of the Prismacolor Premier White, you could substitute Derwent Drawing Pencil Chinese White (note that this white comes from the Derwent Drawing Pencil line—other Derwent lines of pencils are not as opaque), or a Caran d'Ache Luminance White.

*\*As this is a fugitive color, you can opt to substitute Luminance Anthraquinoid Pink or Pablo Salmon Pink*

*\*\*Also a fugitive color. Best substitute is Polychromos Rose Carmine*

**QUESTIONS ABOUT SUPPLIES?** Contact Amy Lindenberger at [amyltree@yahoo.com](mailto:amyltree@yahoo.com)